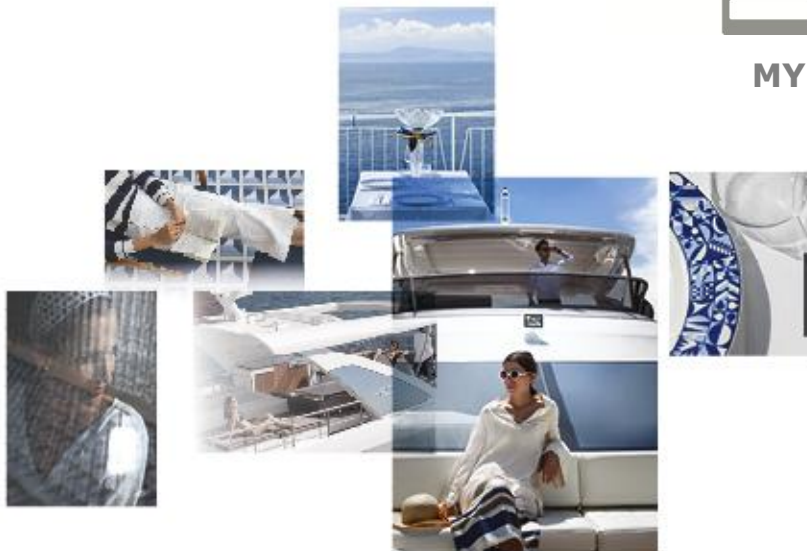




MY 2016



SECONDHAND SELECTION

Flybridge  
Collection



**€ 4,300.000 ex VAT – Limassol, Cyprus**

SECONDHAND SELECTION



EXTERNAL VIEWS

SECONDHAND SELECTION



EXTERNAL VIEWS

SECONDHAND SELECTION



EXTERNAL VIEWS

SECONDHAND SELECTION



FLYBRIDGE

SECONDHAND SELECTION



FLYBRIDGE

SECONDHAND SELECTION



FLYBRIGDE

SECONDHAND SELECTION





COCKPIT AREA

SECONDHAND SELECTION



SALON AREA

SECONDHAND SELECTION



DINNING AREA

SECONDHAND SELECTION



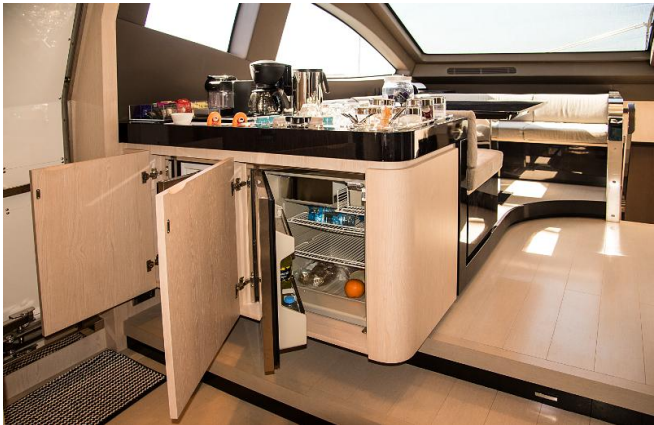
HELM STATION

SECONDHAND SELECTION



SITTING AREA NEXT TO HELM STATION

SECONDHAND SELECTION



SALON BAR



GALLEY

SECONDHAND SELECTION



DAY HEAD AT MAIN DECK

SECONDHAND SELECTION





MASTER CABIN

SECONDHAND SELECTION



MASTER CABIN HEAD

SECONDHAND SELECTION



MASTER CABIN HEAD



VIP CABIN

SECONDHAND SELECTION



PORT DOUBLE GUEST CABIN

SECONDHAND SELECTION



PORT GUEST HEAD

SECONDHAND SELECTION



STARBOARD GUEST CABIN

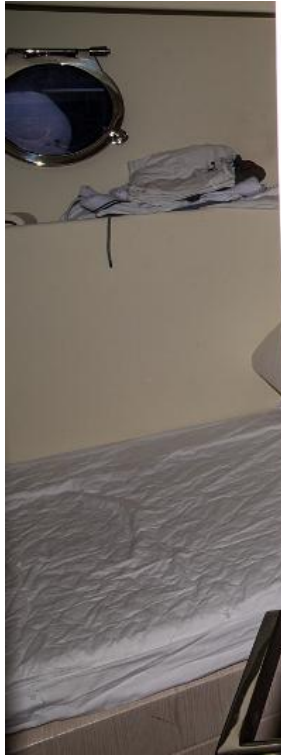
SECONDHAND SELECTION



STARBOARD GUEST HEAD

SECONDHAND SELECTION





CREW CABIN

SECONDHAND SELECTION



CREW CABIN

SECONDHAND SELECTION



ENGINE ROOM

SECONDHAND SELECTION

Length overall 26.80 m  
Beam max 6.40 m  
Draft 1.83 m  
Fuel capacity 9.000 l  
Water capacity 1.300 l  
Holding Tank capacity 700 l  
Grey Water Tank 600 l  
Cabins 4 + 2 crew  
Head compartments 5 + 1  
Building material GRP

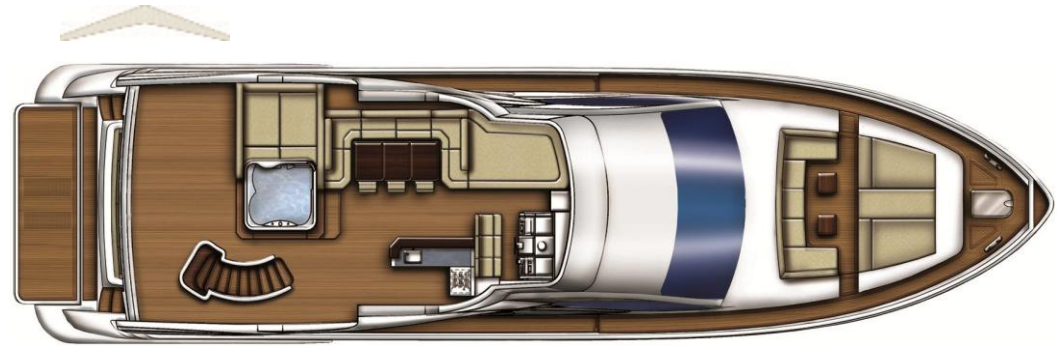
**Year: 2016**

**Engine: 2 x CAT C32 ACERT, 1825HP each**

**Engines Hours: 413**

**Generator: KOLHER 2x28kw 20V/50hz**

**Generators Hours: 1191 both**



Technical Data and General Arrangement

SECONDHAND SELECTION



## OPTION LIST

- Zero Speed Stabilizers
- Bow and Stern Thruster
- Water Maker IDROMAR 180L/h
- Hard Top
- Folding bimini top on bow
- Upgraded A/V package – Silver version\*
- Upgraded navigation package – Gold version (Raymarine GS series) N.2 Raymarine GS165 15.4" Glass Bridge in main wheelhouse and N.2 Raymarine GS125 12" Glass Bridge in flybridge \*
- 360° Video Camera in aft cockpit ceiling + zooming video camera in engine room, connected to Raymarine monitors in wheelhouse and on flybridge
- Automated control system thru iPad for electric curtains in salon and master cabin – TV & lighting system
- Additional radar arch
- Electrical system 220V-50hz
- Dimmers for external & internal lights
- Central Vacuum system
- Oil change system for main engines and generators
- 4 Underwater lights
- Teak laid flybridge floor
- Fridge & Ice maker in the flybridge bar cabinet
- Salon Refrigerator & Ice maker
- Separate BBQ cabinet placed in flybridge.
- Fiberglass furniture in cockpit with sink and fridge
- Additional folding bed in starboard side guest cabin
- TV predisposition in the cockpit
- TV on fly
- TV in crew mess
- Additional TV on the bow bulkhead in dinette area
- KVH SAT TV system
- SAT decoder 'free to air' in salon and in all cabins
- Washer in crew cabin
- Dryer in crew cabin
- Wooden floor on all main deck including wheelhouse and step
- Wooden floor in all the heads (master and day head excluded)
- Venetian blinds in light colour in all head
- Roman shades + separate blackout roll in all cabins & salon
- Electric curtains in salon and master cabin
- Electric curtains to cover the aft flybridge
- Two umbrellas for flybridge
- All marbles in all heads is Calacatta
- Three round stools without backrest at the bar
- Net/curtain to cover the aft section of the cockpit
- Predisposition for crane
- Williams 385 tender
- Painted hull – gunwale and transom in dark grey metallic



## OPTION LIST

### **\*Upgraded Navigation Package - Gold Version (Full Raymarine GS series)**

#### *WHEELHOUSE*

- N.2 Raymarine GS165 15.4" Glass Bridge
- N.1 Raymarine a65 Color Display
- N.1 Raymarine p70R color display autopilot
- N.1 VHF RADIO Ray 260E

#### *FLYBRIDGE*

- N.2 Raymarine GS125 12" Glass Bridge
- N.1 Raymarine a65 Color Display
- N.1 Raymarine p70R color display autopilot
- N.1 VHF Ray 260E Second Station

#### *ROLL BAR*

- N.1 Radar 4kW 48"HD Digital Antenna Open Array
- N.1 RAYSTAR 130 GPS Antenna
- N.1 VHF Antenna

#### *EMERGENCY RUDDER STATION*

- N.1 Raymarine a65 Color Display

#### *HULL*

- N.1 Depth /Speed/ Temp . Trasducer

#### *ACCESSORIES*

- EVOLUTION EV1 Sensor Core
- ACU- 300 Actuator Control Unit
- HS5 Network Switch 5x Raynet (M)

### **\*Upgraded Audio/Video Package - Silver Version**

#### *SALON*

- 46" LED TV Samsung UE46F8000
- Sony BDPS 580 Blue Ray Player
- Bose -V -25 Amplifier

#### *MASTER CABIN*

- 46" LED TV Samsung UE46F8000
- Sony BDPS 580 Blue Ray Player
- Bose -T- 10 Amplifier

#### *Bose I - pod dock*

#### *VIP CABINS*

- 19" LED TV Samsung UE19D4003
- Yamaha E750 Blue Ray Player & Amplifier combo unit
- 2 B&W CWM362 speakers

#### *GUEST CABINS*

- 26" LED TV Samsung UE26EH4000 in the port guest cabin & 19" LED TV Samsung UE19D4003
- Yamaha E750 Blue Ray Player & Amplifier combo unit
- 2 B&W CWM362 speakers

#### *CREW MESS*

- 19" LED TV Samsung UE19D4003
- Boss M3.6 CD/DVD player
- 2 Sony XSF-1327 speakers

#### *AFT COCKPIT*

- Bose SA-2 Amplifier
- 2 Fusion MS- FR602 Speakers
- Bose RC -35S2 remote control

#### *BOW AREA*

- Bose SA-2 Amplifier
- 2 Fusion MS- FR602 Speakers
- Bose RC -35S2 remote control

#### *FLYBRIDGE*

- Bose SA-2 Amplifier
- 2 Fusion MS- FR602 Speakers
- Bose RC -35S2 remote control



## CONTACT INFO

Marios Iordanous  
BLUE POINT YACHTING LTD

[sales@bpyachting.com](mailto:sales@bpyachting.com)

Mob. +357 99 626 993



## THIS DOCUMENT IS VALID AS A PRELIMINARY PRESENTATION ONLY

This brochure in no way constitutes a contract of sale for the boatyard's vessels to any person or company. All information contained herein, including but not limited to technical and performance data, illustrations, and drawings, is non-binding and for purposes of illustration only. Developer is not required to deliver a unit in exact accordance with any image or floor plan depicted. Despite efforts to ensure the greatest possible accuracy, Flybridge 66 design is currently on going, therefore images are valid as artist's rendering only. It is not possible to ensure that all information is up to date.